



Reptile Systems



www.reptilesystems.com

OUR STORY



To understand the passion and drive behind the Reptile Systems brand it may help to look back at our pedigree. To the casual observer Reptile Systems burst onto the scene in August 2017, leapfrogging many established brands, in both quality and value.

Reptile Systems is part of a group of European companies belonging to ASF, which have been established as world leaders in aquarium salt technology and production for over fifty years.

Reptile Systems phenomenal evolution is fueled by belief in constant testing and developing products that try to emulate our pets environmental and physiological needs.

Our main area for the brands research, innovation and development is based in the UK and run by our team of devoted professionals, whom have many decades of exotic animal keeping.

We have a dedicated staff and facility responsible for concept, development and prototype building as well as long term testing for new and existing ranges.

We also test as many different manufacturers products as practicable. It became very apparent that many may not even be aware of the parameters of their own products and this was amplified by some of the long-term reliability testing results. We took this as a big positive step and all items that we produce are fully tested. We have all of our range on long term test, including real life setups.

As keepers and hobbyist ourselves we believe that your animal deserves the best which is why we continue to test, research and develop products pushing the standards higher as technology allows, we welcome you to join the journey to enlightened pet care.

Follow us on social media for the latest developments and news @my_reptilesystems

Why should you choose Reptile Systems?

- Peace of mind.
- High quality, fully tested, premium products at affordable prices.
- Designed by hobbyists, engineered by professionals.
- Has a dedicated UK long term test facility with several hundred products on test at any one time.
- Backed by a global company with full product support.
- Excellent customer services through our social media platforms to help consumers.

Reptile Systems has developed a series of Animal Care Guides for the most popular reptiles. This guides provide you with basic vivarium set-ups, lighting requirements and feeding needs. Please scan the QR code for access to them or go to www.ReptileSystems.com



FERGUSON ZONE CONCEPT

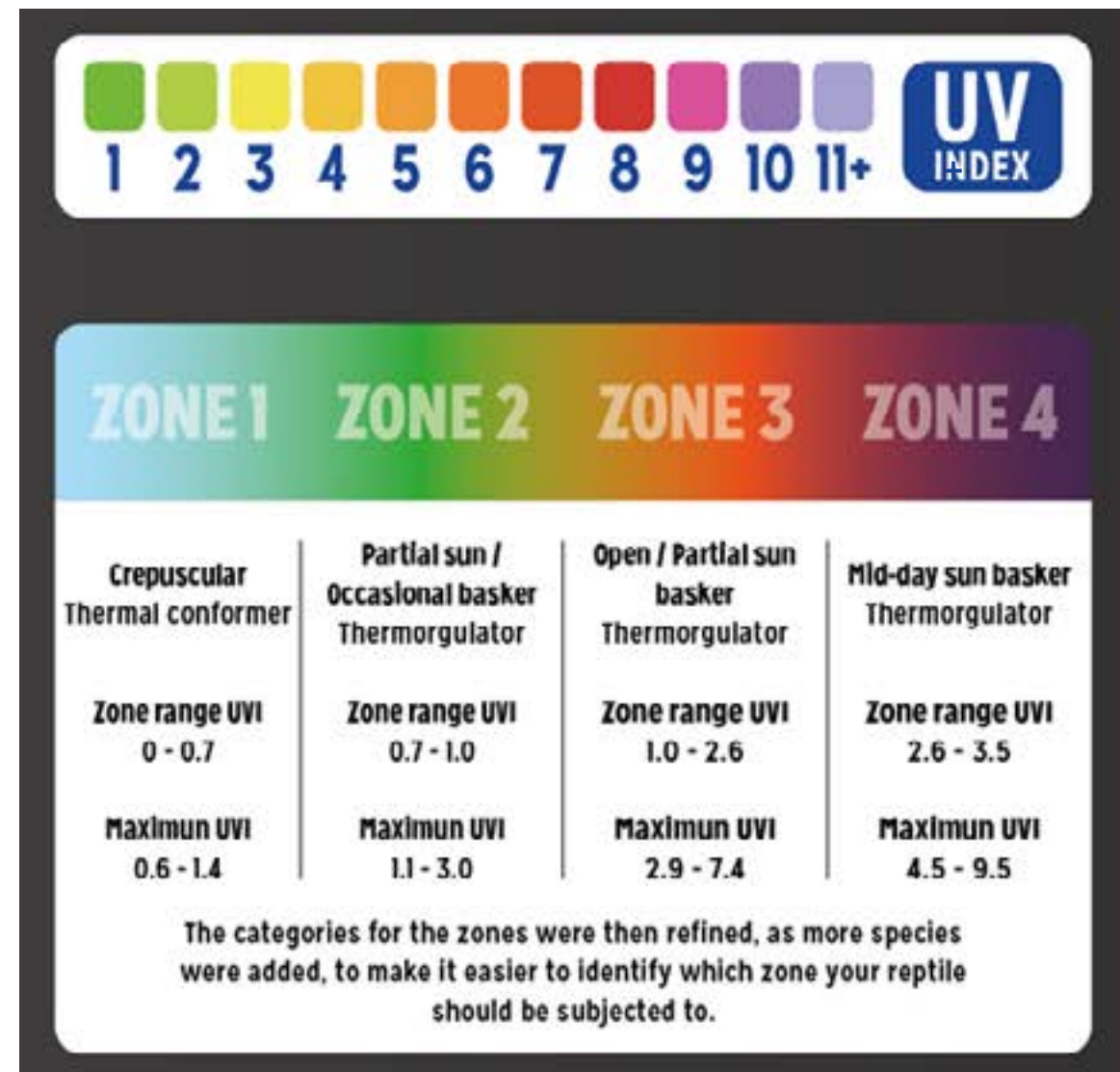
The Ferguson zone concept, based on the research of Dr. Gary Ferguson, was developed to more scientifically classify animals based on their natural habits of choosing basking sites and how long they inhabited those sites. Reptiles bask in sunlight for heat and UVB exposure.

For maximum health such as calcium absorption and vitamin D3 production reptiles need this regular exposure to light. But, of course, not all reptiles are the same. This led to the confusing product concept of forest versus desert species and percentage daylight. The Ferguson zone concept replaces this archaic method with an easier to understand, scientifically-based model based on the UV index (UVI).

The chart below shows the general classification ranging from Zone 1 animals (low UVI exposure) to Zone 4 animals (high UVI exposure). For more information see page 15 and please visit www.ReptileSystems.com.



Scan to Learn More



NEW DAWN PROTEN LED



TRUE 6500°K LED LIGHT SOURCE.

High light levels at the correct wavelengths for powerful plant growth.

- Blue and red spectrums to encourage plant growth and flowering.
- Low energy consumption.
- Extendable arms.
- Controller with Dual Channel On/Off LED.
- Supplied with 4 clamp fixings.
- 2 year guarantee.

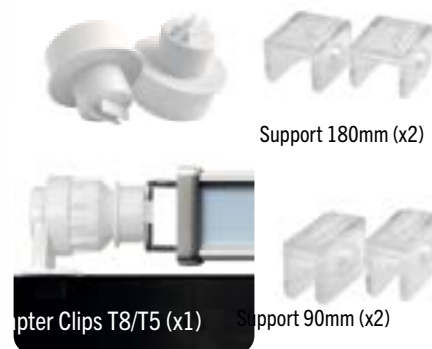
1) Adapter clips

Compatible with T5 & T8 fittings. Allows easy retro fitting into the vast majority of existing aquarium light fittings (Included).

2) Bluetooth controller

Compatible with Bluetooth Dimming (Not included).

Accessories Included:

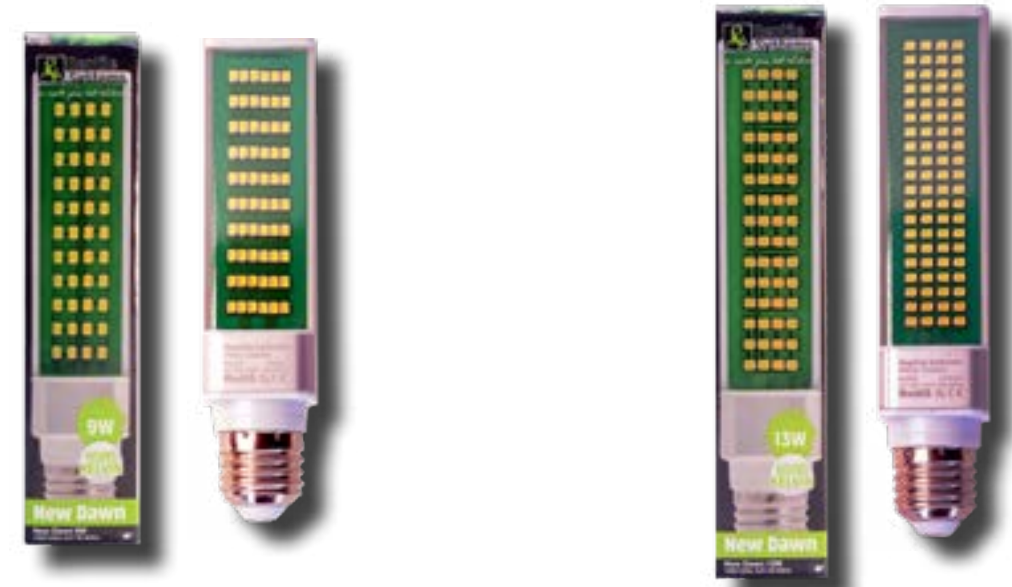


| | 7W | 14W | 21W | 28W |
|--------------|--|--|--|--|
| LED's | 27 | 54 | 81 | 108 |
| Lumens (lm) | 500 | 800 | 1300 | 1700 |
| Color | 21pcs x White 3pcs x Blue 3pcs x Red | 42pcs x White 6pcs x Blue 6pcs x Red | 63pcs x White 9pcs x Blue 9pcs x Red | 84pcs x White 12pcs x Blue 12pcs x Red |
| Length | 10-18 in | 18-24 in | 24-36 in | 36-48 in |
| Art.N° / EAN | 119003 / 3443981190037 | 119004 / 3443981190044 | 119005 / 3443981190051 | 121007 / 3343981210070 |

| ITEM NUMBER | WATTAGE | SIZE | DESCRIPTION |
|-------------|---------|----------|------------------------------------|
| 119003 | 7 watt | 10-18 in | Protén LED New Dawn Fixture 6500°K |
| 119004 | 14 watt | 18-24 in | Protén LED New Dawn Fixture 6500°K |
| 119005 | 21 watt | 24-36 in | Protén LED New Dawn Fixture 6500°K |
| 121007 | 28 watt | 36-48 in | Protén LED New Dawn Fixture 6500°K |

NEW DAWN COMPACT LED

- True 6500°K light source
- High light levels at the right wavelengths for powerful plant growth
- For best performance use in the horizontal position
- Perfect to increase visible light levels and alongside UVB emitting lamps
- 120 degree beam angle
- Ideal to use with Compact Lamp Fixture



| ITEM NUMBER | WATTAGE | SIZE | DESCRIPTION |
|-------------|---------|---------|-----------------------------|
| 117023 | 9 watt | 6" long | New Dawn Compact LED 6500°K |
| 117024 | 13 watt | 7" long | New Dawn Compact LED 6500°K |



NEW DAWN LED SPOTS & FLOOD



| ITEM NUMBER | WATTAGE | DESCRIPTION |
|-------------|---------|-------------------------------|
| 117028 | 10 watt | New Dawn Spot 10W 6500°K LED |
| 117029 | 25 watt | New Dawn Spot 25W 6500°K LED |
| 117030 | 35 watt | New Dawn Flood 35W 6500°K LED |

NEW DAWN LED SPOTS & FLOOD

New Dawn Spot 10W

Art. N° 117028
EAN 3443981170282

40°
BEAM ANGLE

Lumen (lm) : >700
Color Temperature (Kelvin) : 6500
CRI (color rendering Index) : >90

New Dawn Spot 25W

Art. N° 117029
EAN 3443981170299

25°
BEAM ANGLE

Lumen (lm) : >2000
Color Temperature (Kelvin) : 6500
CRI (color rendering Index) : >90

HIGH QUALITY LENS
TIMER READY

New Dawn Flood 35W

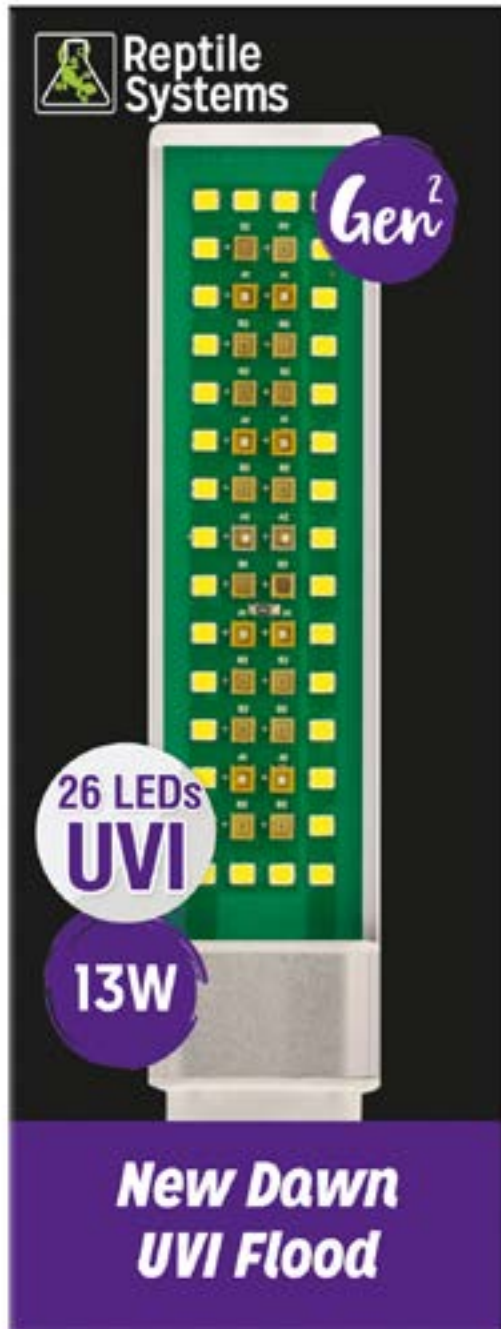
Art. N° 117030
EAN 3443981170305

80°
BEAM ANGLE

Lumen (lm) : >3000
Color Temperature (Kelvin) : 6500
CRI (color rendering Index) : >90

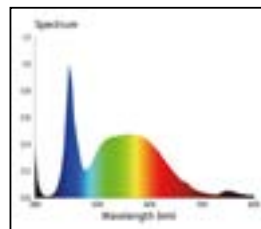
4 LED BUNDLES
TIMER READY

NEW DAWN UVI FLOOD



60 LEDs
 10 x UVA LED
 16 x UVB LED
 34 x 6500K LED

UVA + UVB = UVI



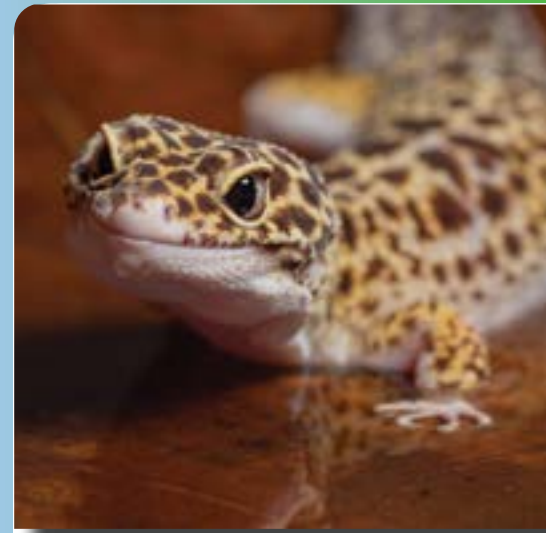
60 LEDs
 10 x UVA LED
 Including low and high range
 16 x UVB LED
 Including low and high range
 34 x 6500K LED

UVA + UVB = UVI

6,8W of visible light + **6,2W** of UVI = **13W**

| ITEM NUMBER | WATTAGE | DESCRIPTION |
|-------------|---------|-----------------------------------|
| 121020 | 13 watt | New Dawn UVI Flood 13W 6500°K LED |

COMPACT PRO LAMP AND UNIT



Compact Lamp Unit Single
 Compact lighting system with ceramic lamp holder and reflector.

- Can be fitted inside a vivarium or placed over a mesh top vivarium.
- Universal ceramic E26 fitting.
- Directional light with multiple angles.
- Switch on the cable.
- Removable safety mesh.
- High performance aluminum reflector.
- Sturdy aluminum housing.
- Lamp not included.

Reptile Compact Pro 6% UVB - UVI: 1.2%
 Reptile Compact Pro 12% UVB - UVI: 1.5%

UVI: Average UVI at 12 inches without reflector over 6 months of testing in our long-term Testing Facility.

- 6% and 12% UVB - High Output for the synthesis of Vitamin D3.
- 30% UVA.
- Full spectrum, excellent color rendition.
- Use as a UV Basking Lamp.
- No ballast needed, uses standard E26 screw fitting.
- Not dimmable.

| ITEM NUMBER | WATTAGE | SIZE | DESCRIPTION |
|-------------|---------|-------|------------------------------------|
| 118007 | 23 watt | — | Compact UVB Pro 6% UVB Zone 2 |
| 118008 | 23 watt | — | Compact UVB Pro 12% UVB Zone 3 |
| 317202 | | 12 in | Compact Lamp Fixture and Reflector |

ECO T5 UNIT LIGHT FIXTURE

Measurements are after 100 hours of use

| Distance cm/inch | Lamp Only - no reflector | With reflector in low output position | With Reflector in high output position |
|------------------|--------------------------|---------------------------------------|--|
| 20cm/ 8" | 1.4 | 1.8 | 4.5 |
| 30cm/ 12" | 0.9 | 1.2 | 2.8 |
| 40cm/ 16" | 0.5 | 0.9 | 2.0 |
| 50cm/ 20" | 0.4 | 0.6 | 1.3 |

Measurements are after 100 hours of use

| Distance cm/inch | Lamp Only - no reflector | With reflector in low output position | With Reflector in high output position |
|------------------|--------------------------|---------------------------------------|--|
| 20cm/ 8" | 3.2 | 3.8 | Not safe |
| 30cm/ 12" | 2.2 | 2.4 | 6.6 |
| 40cm/ 16" | 1.2 | 1.5 | 4.0 |
| 50cm/ 20" | 0.9 | 1.1 | 2.8 |

Measurements are after 100 hours of use

| Distance cm/inch | Lamp Only - no reflector | With reflector in low output position | With Reflector in high output position |
|------------------|--------------------------|---------------------------------------|--|
| 20cm/ 8" | 4.2 | 5.2 | Not safe |
| 30cm/ 12" | 2.6 | 3.6 | Not safe |
| 40cm/ 16" | 1.8 | 2.4 | 5.7 |
| 50cm/ 20" | 1.3 | 1.6 | 4.1 |

| ITEM NUMBER | WATTAGE | SIZE | DESCRIPTION |
|---|---------|-------|----------------------------------|
| Eco T5 Unit Zone 1 Light Fixture | | | |
| 121022 | 8W | 12 in | Eco T5 Unit Zone 1 Light Fixture |
| 121023 | 24W | 24 in | Eco T5 Unit Zone 1 Light Fixture |
| 120126 | 39W | 36 in | Eco T5 Unit Zone 1 Light Fixture |
| 121029 | 54W | 48 in | Eco T5 Unit Zone 1 Light Fixture |
| Eco T5 Unit Zone 2 Light Fixture | | | |
| 121024 | 24W | 24 in | Eco T5 Unit Zone 2 Light Fixture |
| 121027 | 39W | 36 in | Eco T5 Unit Zone 2 Light Fixture |
| 121030 | 54W | 48 in | Eco T5 Unit Zone 2 Light Fixture |
| Eco T5 Unit Zone 3 Light Fixture | | | |
| 121025 | 24W | 24 in | Eco T5 Unit Zone 3 Light Fixture |
| 121028 | 39W | 36 in | Eco T5 Unit Zone 3 Light Fixture |
| 121031 | 54W | 48 in | Eco T5 Unit Zone 3 Light Fixture |

- If using mesh topped enclosures this may reduce UVI up to 40%
- All measurements have a 10-15% variability

FIXTURES AND REPLACEMENT REFLECTORS

- Combines a Reptile Systems High Output T5 lamp with a reliable, electronic, flicker free ballast fitting all in one convenient easy to use fixture.
- A removable reflector with its 103 degree beam angle offers the best dispersion of light and UV over the enclosure resulting in an optimal environment for your animals.
- Can be linked together with the enclosed link cable. Up to 10 fixtures (depending on the size of unit) can be linked together for covering a larger area with light and UV.
- Screws and brackets are included for mounting the fixture.
- 2 years warranty.



What's in the box



| ITEM NUMBER | WATT | DESCRIPTION |
|-------------|---------|---------------------------------------|
| 121042 | 8 Watt | Replacement Reflector for Eco T5 Unit |
| 121043 | 24 Watt | Replacement Reflector for Eco T5 Unit |
| 121044 | 39 Watt | Replacement Reflector for Eco T5 Unit |
| 121045 | 54 Watt | Replacement Reflector for Eco T5 Unit |

TWIN T5 BALLAST

Reptile Systems electronic ballast has been specially designed for lighting T5 fluorescent lamps for reptile, turtle and bird habitats. It is both easy and safe to operate. Convenient and easy to install with all the necessary hardware included.

- High quality electronic ballast.
- Can operate with two T5 lamps.
- On/off switch.
- No blinking. Effectively reduces strain and stress on reptiles.
- Long End cap leads
- Ideal for use with a Reptile Systems T5 Lamps (not included).
- Easy to install.



| ITEM | WATTS | DESCRIPTION |
|--------|-------|--|
| 120040 | 24 w | T5 Electronic Ballast 24 watt Double (24 in) |
| 120041 | 39 w | T5 Electronic Ballast 39 watt Double (36 in) |
| 120042 | 54 w | T5 Electronic Ballast 54 watt Double (48 in) |

WASTE-AWAY® GEL TIME RELEASE



Waste-Away® gels continuously release good bacteria into the water.

These good bacteria consume nitrates, phosphates, and organics keeping the water clean and clear.

Waste-Away® gels release bacteria for a period of up to 30 days and change color when they need to be replaced.



| ITEM NUMBER | SIZE | TREATS |
|-------------|-----------------|----------------------|
| 130 | Small | up to 10 gal- 38 L |
| 131 | Small (2 pack) | up to 20 gal- 76 L |
| 132 | Medium | up to 50 gal- 189 L |
| 133 | Medium (2 pack) | up to 100 gal- 378 L |

T5 LAMPS



| Distance from Lamp | UVI without reflector | UVI with reflector |
|--------------------|-----------------------|--------------------|
| 2" | Not Safe | Not Safe |
| 4" | 1.7 | Not Safe |
| 8" | 0.9 | 1.5 |
| 12" | 0.8 | 1.0 |
| 16" | 0.4 | 0.6 |
| 20" | 0.3 | 0.5 |

| Distance from Lamp | UVI without reflector | UVI with reflector |
|--------------------|-----------------------|--------------------|
| 2" | Not Safe | Not Safe |
| 4" | 4.5 | Not Safe |
| 8" | 2.1 | 3.5 |
| 12" | 1.0 | 1.8 |
| 16" | 0.7 | 1.3 |
| 20" | 0.5 | 0.8 |



| ITEM NUMBER | WATTAGE | SIZE | DESCRIPTION |
|---------------------------------|---------|-------|----------------|
| T5 LAMPS FERGUSON ZONE 1 | | | |
| 321000 | 8W | 12 in | Zone 1 UVI 1.0 |
| 320008 | 24W | 24 in | Zone 1 UVI 1.0 |
| 320009 | 39W | 36 in | Zone 1 UVI 1.0 |
| 320010 | 54W | 48 in | Zone 1 UVI 1.0 |
| T5 LAMPS FERGUSON ZONE 2 | | | |
| 117003 | 24W | 24in | Zone 2 UVI 1.8 |
| 117004 | 39W | 36 in | Zone 2 UVI 1.8 |
| 117005 | 54W | 48 in | Zone 2 UVI 1.8 |

T5 LAMPS

| Distance from Lamp | UVI without reflector | UVI with reflector |
|--------------------|-----------------------|--------------------|
| 2" | Not Safe | Not Safe |
| 4" | 5.9 | Not Safe |
| 8" | 3.1 | 5.8 |
| 12" | 2.3 | 4.1 |
| 16" | 1.5 | 2.6 |
| 20" | 0.8 | 1.4 |

- 4 Ferguson Zone T5 Lamp ranging from 1.0 UVI – 7.4 UVI
- UVI aids the synthesis of vitamin D3
- Improves feeding and breeding behavior.
- Full spectrum lamp.
- Produces excellent natural colors and iridescence.
- Always provide shade area for animals.



| ITEM NUMBER | WATTAGE | SIZE | DESCRIPTION |
|---------------------------------|---------|-------|----------------|
| T5 LAMPS FERGUSON ZONE 3 | | | |
| 117006 | 24W | 24 in | Zone 3 UVI 4.1 |
| 117007 | 39W | 36 in | Zone 3 UVI 4.1 |
| 117008 | 54W | 48 in | Zone 3 UVI 4.1 |



T5 LAMPS



For best results use with a T5 luminaire or Electronic Controller and replace after one year of normal use. This lamp will only operate when used with equipment containing an appropriate T5 electronic ballast.

| ITEM NUMBER | WATTAGE | SIZE | DESCRIPTION |
|---------------------------------|---------|-------|----------------|
| T5 LAMPS FERGUSON ZONE 4 | | | |
| 121046 | 24W | 24 in | Zone 4 UVI 7.4 |
| 121047 | 39W | 36 in | Zone 4 UVI 7.4 |
| 121048 | 54W | 48 in | Zone 4 UVI 7.4 |

MERCURY VAPOR LAMPS

70 WATT



| Distance | | UVI |
|----------|------|------|
| (inch) | (cm) | |
| 2 | 5 | 34.1 |
| 4 | 10 | 15.2 |
| 6 | 15 | 10.8 |
| 8 | 20 | 7.5 |
| 10 | 25 | 5.5 |
| 12 | 30 | 4.0 |
| 14 | 35 | 3.5 |
| 16 | 40 | 2.4 |
| 18 | 45 | 1.9 |
| 20 | 50 | 1.4 |
| 22 | 55 | 1.2 |
| 24 | 60 | 1.0 |
| 26 | 65 | 0.9 |
| 28 | 70 | 0.8 |

80 WATT



| Distance | | UVI |
|----------|------|------|
| (inch) | (cm) | |
| 2 | 5 | 14.9 |
| 4 | 10 | 9.5 |
| 6 | 15 | 7.6 |
| 8 | 20 | 4.8 |
| 10 | 25 | 3.9 |
| 12 | 30 | 3.0 |
| 14 | 35 | 2.6 |
| 16 | 40 | 2.1 |
| 18 | 45 | 1.8 |
| 20 | 50 | 1.4 |
| 22 | 55 | 1.1 |
| 24 | 60 | 0.9 |
| 26 | 65 | 0.7 |
| 28 | 70 | 0.7 |

100 WATT



| Distance | | UVI |
|----------|------|------|
| (inch) | (cm) | |
| 2 | 5 | 22.2 |
| 4 | 10 | 17.6 |
| 6 | 15 | 10.5 |
| 8 | 20 | 8.4 |
| 10 | 25 | 6.1 |
| 12 | 30 | 5.0 |
| 14 | 35 | 4.5 |
| 16 | 40 | 3.4 |
| 18 | 45 | 2.5 |
| 20 | 50 | 2.1 |
| 22 | 55 | 1.6 |
| 24 | 60 | 1.4 |
| 26 | 65 | 1.1 |
| 28 | 70 | 1.0 |
| 30 | 75 | 0.9 |
| 32 | 80 | 0.9 |
| 34 | 85 | 0.7 |

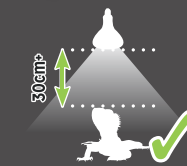
125 WATT



| Distance | | UVI |
|----------|------|------|
| (inch) | (cm) | |
| 2 | 5 | 47.1 |
| 4 | 10 | 24.9 |
| 6 | 15 | 15.6 |
| 8 | 20 | 10.6 |
| 10 | 25 | 7.5 |
| 12 | 30 | 6.4 |
| 14 | 35 | 4.8 |
| 16 | 40 | 3.9 |
| 18 | 45 | 3.3 |
| 20 | 50 | 2.7 |
| 22 | 55 | 2.3 |
| 24 | 60 | 1.8 |
| 26 | 65 | 1.6 |
| 28 | 70 | 1.6 |
| 30 | 75 | 1.5 |
| 32 | 80 | 1.3 |
| 34 | 85 | 1.1 |
| 36 | 90 | 1.0 |
| 38 | 95 | 1.0 |
| 40 | 100 | 0.9 |

MERCURY VAPOR LAMPS

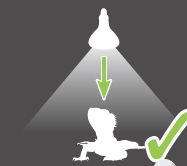
- UV, LIGHT, HEAT -



Provides source of UVA and UVB.

Aids the synthesis of Vitamin D3.

No external ballast required.



Important for reptiles health.

Helps prevent metabolic bone disease.



35 degree beam angle for wide basking area.

Stimulates reproduction

6 Months guarantee

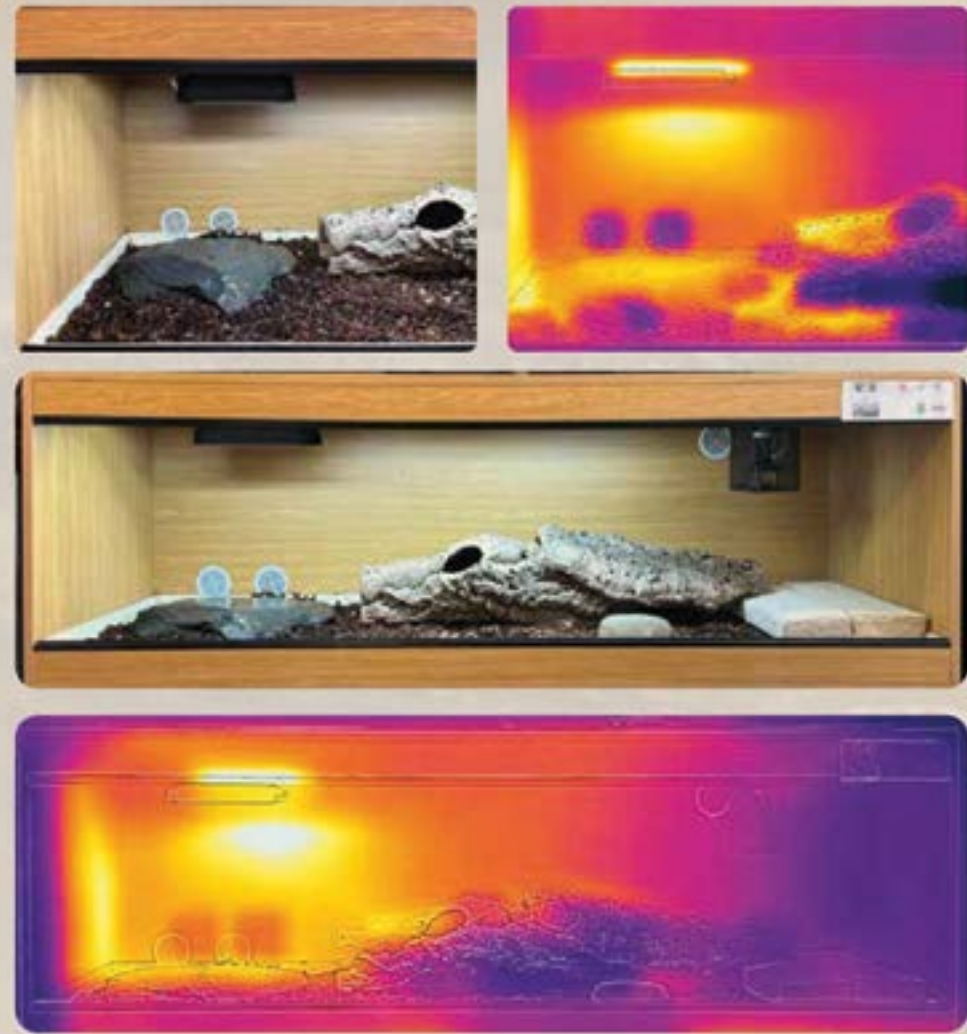


| ITEM NUMBER | WATTAGE | DESCRIPTION |
|-------------|----------|----------------------------|
| 219059 | 70 watt | Mercury Vapor Basking Lamp |
| 219029 | 80 watt | Mercury Vapor Basking Lamp |
| 219030 | 100 watt | Mercury Vapor Basking Lamp |
| 219031 | 125 watt | Mercury Vapor Basking Lamp |

GOLD INFRARED LAMP

Reptile Systems is no stranger to being at the forefront of emerging technologies. In fact development is such a large part of our core principles that we have recently doubled our dedicated testing and animal welfare areas.

The gold Infrared lamp is like no other reptile heating product available anywhere in the world. Using the latest heating technology it warms your reptiles in a natural way, replicating the heating effect of the sun using infrared wavelengths.



- Provides infrared A and B for heating of your animals
- Compact all black design that spreads heat over a large area
- Can be used with dimming or on/off thermostat
- Available in 50w, 100w, 200w & 400w for all enclosure size
- Only heat source required for your vivarium

GOLD INFRARED LAMP

What is infrared?

The sun brings life to our planet on many different levels and interactions. As reptile keepers the three sectors we are interested in are ultraviolet, visible light and infra-red.

The Sun's spectral wavelengths are measured in nanometres (nm) and are divided into groups depending on the wavelengths. Infrared starts on the edge of visible light spectrum, where the human eye only sees between 400 and 700nm, we move into infrared ranges which are the wavelengths that keep us warm. The near infrared (IR-a) borders around 700nm up to 1400nm, with IR-b around 1400 - 3000nm. After this it's known as IR-c.

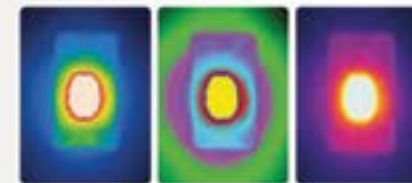
Did you know that the gap in the wavelength is measured in nm and that a nanometre is a billionth of a metre?



What is a gold infrared lamp?

The gold infrared lamp is so named because of the gold metallic sheen the product has when cold and switched off. Infrared light is virtually invisible to the human eye, with the low end just giving that red glow that you get from hot embers.

A revolutionary feature of this product will be the wide range of outputs that will be available. The 75w, 100w, 200w and 400w are all compatible with the Gold Infrared Lamp Unit, making it the most compact and powerful unit in production.



How does it work?

This product provides a high level of heat and a low level of visible light. Infrared light is direct and not effected by air movement making it up to fifty percent more effective than other methods of heating. The heat is projected over a large area, which unlike that of spot lamp allows for a more natural basking experience. This large area is full of energy rich infrared which is reflected and absorbed by the surrounding surfaces much in the way the sun provides heat; you would feel a warm, pleasant sensation as the near infrared penetrated your skin and the heat that had been absorbed and stored by the sand under your feet which has been re-radiated by conduction. This radiator effect is IR-c as it will also heat the surrounding air, via convection, much in the same way a radiator will heat your home. This also explains the three ways heat is transferred: radiation, conduction and convection.



GOLD INFRARED UNITS IRA & IRB

| ITEM # | WATTAGE | DESCRIPTION |
|--------|----------|------------------------------|
| 121061 | 50 watt | Gold Infrared Lamp Unit 50W |
| 121062 | 100 watt | Gold Infrared Lamp Unit 100W |
| 121063 | 200 watt | Gold Infrared Lamp Unit 200W |
| 121064 | 400 watt | Gold Infrared Lamp Unit 400W |

GOLD INFRARED REPLACEMENT LAMPS

| ITEM # | WATTAGE | DESCRIPTION |
|--------|----------|--------------------------------|
| 122033 | 50 watt | Gold Infrared Replacement 50W |
| 122034 | 100 watt | Gold Infrared Replacement 100W |
| 122035 | 200 watt | Gold Infrared Replacement 200W |
| 122036 | 400 watt | Gold Infrared Replacement 400W |

CERAMIC HEAT LAMPS



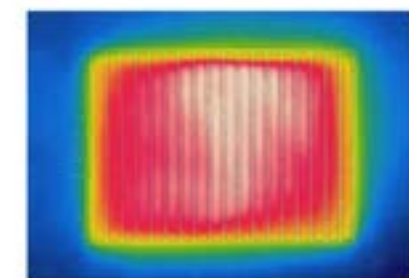
- Ideal for creating necessary warm areas in the terrarium.
- Supports digestion, promotes well-being and activity.
- Suitable as a constant heat source in terrariums.
- Enables night observation of the animals without disrupting the 24 hour cycle.
- Ideal in combination with a suitable thermostat in order to regulate the heat.
- Only use Heat Emitter in a suitable Ceramic Black Lamp Holder.
- Emits heat only. Does not emit visible light.

| ITEM NUMBER | WATTAGE | CLAMP LAMP SIZE | DESCRIPTION |
|-------------|---------|-----------------|------------------------------|
| 120050 | 60W | Small | Ceramic Heat Lamp - 60 watt |
| 120051 | 100W | Medium | Ceramic Heat Lamp - 100 watt |
| 120052 | 150W | Large | Ceramic Heat Lamp - 150 watt |

HEATING MATS



- Even Heat distribution throughout
- Safe and reliable
- Proven quality heating technology
- Adhesive backing

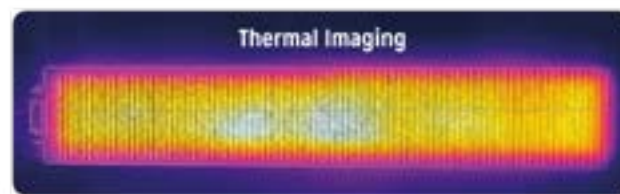


| ITEM # | SIZE (IN) | POWER (W) | PRODUCT NAME |
|--------|-------------|-----------|------------------|
| 122009 | 5.9 x 5.9 | 3.5 | 3.5W Heating Mat |
| 122010 | 11.0 x 6.5 | 8 | 8W Heating Mat |
| 122011 | 11.0 x 11.0 | 16 | 16W Heating Mat |
| 122012 | 11.0 x 16.1 | 24 | 24W Heating Mat |
| 122013 | 25.6 x 11.0 | 38 | 38W Heating Mat |

HEAT STRIPS

The Heating Mats and Heating Strips from Reptile Systems use a patented PTC heating element to heat your enclosure quickly and evenly for the benefit and vitality of your animals. Reptile Systems Heating Mats and Heating Strips are ideal heating for reptiles, amphibians, insects, birds and small animals. They are perfect to use for heating small to large enclosures and for breeder/professional use.

- Heat Strips are provided with an adhesive back for easy positioning.
- Long and narrow - ideal for smaller multiple enclosure such as hatching racks and racking systems used by breeders

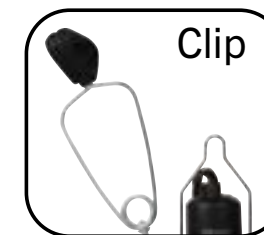


| ITEM # | SIZE (IN) | POWER (W) | PRODUCT NAME |
|--------|-----------|-----------|----------------|
| 122014 | 24 x 6 | 20 | 20W Heat Strip |
| 122015 | 36 x 6 | 25 | 25W Heat Strip |
| 122016 | 44 x 6 | 32 | 32W Heat Strip |

BLACK REFLECTOR CLAMP LAMP



Includes:



Reptile Systems Reflector Dome Ceramic Clamp Lamp Black Edition gives you the best and ideal holder for hanging or clamping your reptile lamps for your enclosures, giving you great flexibility and ease of use.

- Stylish matte black finish.
- Heavy gauge, highly reflective aluminium dome.
- Multi directional clamp fitting.
- Supplied with hook for use with stands.
- Heat resistant ceramic fitting.
- Detachable protective mesh cover.
- In-line on/off switch.

| ITEM NUMBER | WATTAGE | SIZE | DESCRIPTION |
|-------------|--------------|--------|---------------------------------------|
| 220050 | max 75 watt | small | Ceramic Reflector Clamp Black Edition |
| 220051 | max 100 watt | medium | Ceramic Reflector Clamp Black Edition |
| 220052 | max 200 watt | large | Ceramic Reflector Clamp Black Edition |

AL A CARTE

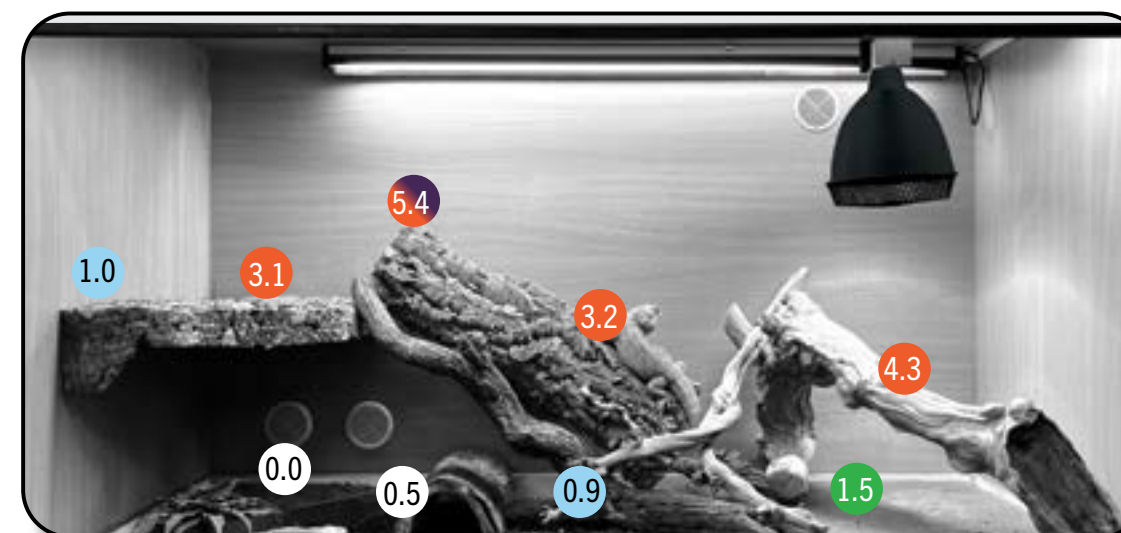
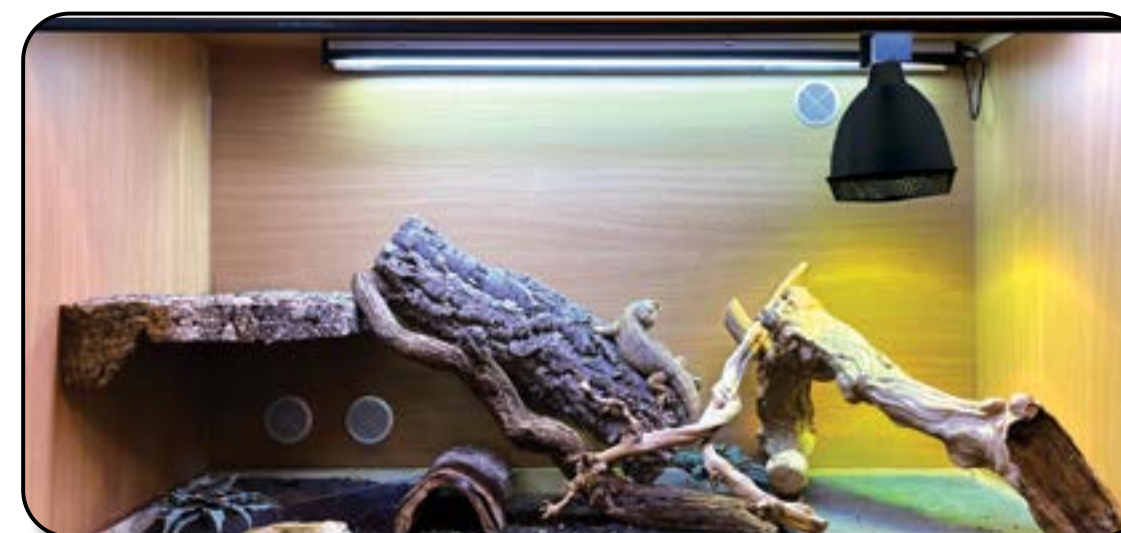


| ITEM NUMBER | PACKAGE | SIZE | DESCRIPTION |
|-------------|---------|--------|--|
| 122037 | Pot | 3.5oz | A La Carte Calcium Ultra - 3.5oz (100g) |
| 122047 | Sachet | 0.35oz | A La Carte Calcium Ultra Sachet - 0.35oz (10g) |
| 122038 | Pot | 3oz | A La Carte Vit-A-Max- 3oz (85g) |
| 122049 | Sachet | 0.35oz | A La Carte Vit-A-Max Sachet - 0.35oz (10g) |
| 122039 | Pot | 3oz | A La Carte Vit-A-Max +D3 - 3oz (85g) |
| 122048 | Pot | 2.1oz | A La Carte Insect Food - 2.1oz (60g) |
| 122040 | Sachet | 0.35oz | A La Carte Insect Food Sachet - 0.5oz (10g) |
| 122041 | Pot | 4.4oz | A La Carte Tortoise Mix - 4.4oz (125g) |
| 122042 | Pot | 4.4oz | A La Carte Turtle Mix - 4.4oz (125g) |

Bearded Dragons are a zone 3 animal and require a maximum UVI of 4-5 which can be achieved close to the lamp or on elevated platforms, however they also need to obtain varying levels of UV all the way down to zero in full shade to enable them to self regulate the amount of UV exposure. The picture of the enclosure shows the full UVI gradient available with basking sites at levels of 3.2 – 5.4 and areas that receive little or no UV, although the majority of his time is spent basking during the day between 3 – 4.

Equipment used

Eco Pro T5 Gen 2, (54w) Zone 3 with Lamp T5 (54w) Zone 3



FERGUSON ZONE

| FERGUSON ZONE | SPECIES INCLUDE | SUGGESTED UVI |
|--|--|---|
| ZONE 1 Crepuscular Thermal conformer | Crested Gecko <i>Correlophus ciliatus</i> Leopard Gecko <i>Eublepharis macularius</i> Tokay Gecko <i>Gekko gekko</i> Milk Snake <i>Lampropeltis triangulum</i> Red Eye Tree Frog <i>Agalychnis callidryas</i> Pacman (Horned) Frogs <i>Ceratophrys ornata</i> | Shade Method: Gradient UVI 0 - 0.7 |
| Intermediate between Zones 1 and 2 | Fiji Banded Iguana <i>Brachylophus fasciatus</i> Corn Snake <i>Pantherophis guttatus</i> | Shade Method: Gradient UVI 0.0 - 0.7 |
| ZONE 2 Partial sun / Occasional basker Thermorgulator | Green Anole <i>Anolis carolinensis</i> Monkey-Tailed Skink <i>Corucia zebata</i> Pygmy Chameleon <i>Rhampholeon</i> Boa Constrictor <i>Boa constrictor</i> Garter Snake <i>Thamnophis</i> Ball (Royal) Python <i>Python regius</i> Snapping Turtles <i>Chelydra serpentina</i> Marine (Cane) Toad <i>Rhinella marina</i> | Shade Method: Gradient UVI 0.0 - 1.0 or Sunbeam Method: UVI Maximun 1.1 - 3.0 in Basking Zone |
| Intermediate between Zones 2 and 3 | Blue-Tongued Skink <i>Tiliqua</i> Chinese Water Dragon <i>Physignathus cocincinus</i> Panther Chameleon <i>Furcifer pardalis</i> | Sunbeam Method: UVI Maximun 1.1 - 3.0 in Basking Zone |
| ZONE 3 Open / Partial sun basker Thermorgulator | Standing's Day Gecko <i>Phelsuma standingi</i> Veiled (Yemen) Chameleon <i>Chamaeleo calyptratus</i> Indian Star Tortoise <i>Geochelone elegans</i> Leopard Tortoise <i>Stigmochelys pardalis</i> Iguana <i>Iguana iguana</i> Sulcata Tortoise <i>Centrochelys sulcata</i> Red-eared Sliders <i>Trachemys scripta elegans</i> Russian Box Turtle <i>Testudo horsfieldii</i> | Sunbeam Method: UVI Maximun 2.9 - 7.4 in Basking Zone |
| Intermediate between Zones 3 and 4 | Bearded Dragon <i>Pogona</i> Painted Turtle <i>Chrysemys picta</i> Red Eared Slider <i>Trachemys scripta elegans</i> | Sunbeam Method: UVI Maximun 2.9 - 7.4 in Basking Zone |
| ZONE 4 Mid-day sun basker Thermorgulator | Chuckwalla <i>Sauromalus</i> Rhinceros Iguana <i>Cyclura cornuta</i> Texas Horned Lizard <i>Phrynosoma cornutum</i> | Sunbeam Method: UVI Maximun 4.5 - 8.0 in Basking Zone |

For a more extensive list visit our website www.reptilesystems.com

FERGUSON ZONE

ZONE 1
UVI 0.7 - 1.4

ZONE 2
UVI 1.1 - 3.0

ZONE 3
UVI 2.9 - 7.4

ZONE 4
UVI 4.5 - 8.0



www.reptilesystems.com



Scan for more info